

**Robust construction  
for most intensive applications**

**Versatile application:  
for lorry doubledeck stacking  
or used as pallet truck/stacker  
in the warehouse**

**ProTracLink for optimum  
travel characteristics**

**Available with foldable  
or fixed stand-on platform**



## ERD 220

### Electric pallet truck/stacker (2000 kg)

The Jungheinrich electric pallet truck ERD 220 is a universal truck. As a double-deck stacker, the ERD picks up two Euro pallets, one upon the other, via mast and support arm lift: ideal for loading and off-loading lorries with two loading levels. The ERD can also be used as pallet truck or stacker in the warehouse.

The ERD is optimally suited for pedestrian as well as stand-on operation. The simple folding down or up of the platform and

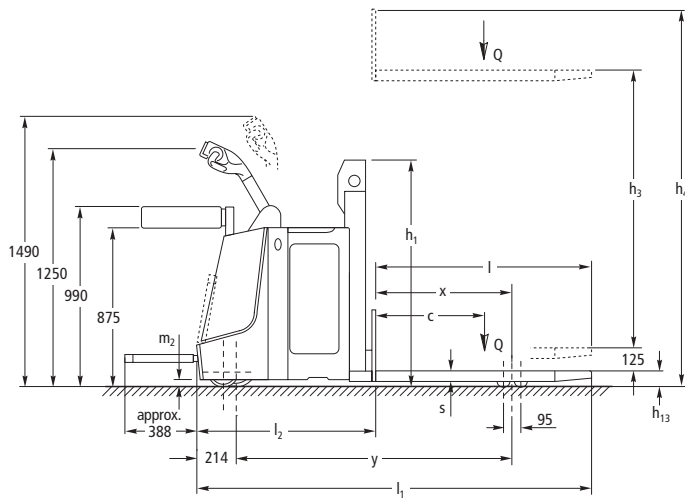
side guards is sufficient for the ERD to adapt to any application. Through its higher speed in stand-on operation – compared with purely pedestrian trucks – throughput and transportation of goods is particularly economical.

The stand-on platform provides excellent comfort and safety: the cushioning noticeably absorbs any bumps when travelling over uneven floors or passing over thresholds. For safety reasons, the platform does

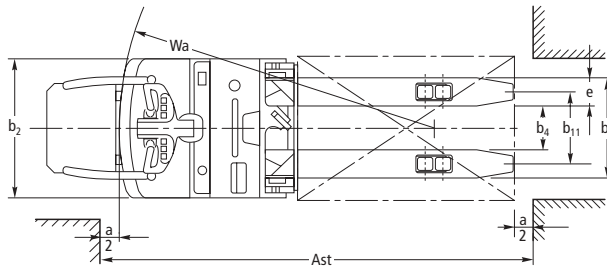
not fold up automatically on stepping off. A simple touch with the foot is sufficient for it to glide back into the truck contours. The rounded contours of platform and side supports reduce the danger of “getting caught” on obstacles such as racking or lorry struts.

The ERD is fed its required energy for an intensive application from batteries up to 375 Ah.

# ERD 220



Mast table ERD 220		
Mast	Closed mast height $h_1$ mm	Lift height $h_3$ mm
ZT	1250	1660
	1430	2010
	1710	2560
DT	1260	2500



# Technical Data in line with VDI 2198 as at: 09/2005

Identification	1.1	Manufacturer (abbreviation)	Jungheinrich	Jungheinrich	1.1
	1.2	Manufacturer's type designation	<b>ERD 220 (K)</b>	<b>ERD 220 (L)</b>	1.2
	1.3	Drive (electric – battery or mains, diesel, petrol, fuel gas, manual)	electric	electric	1.3
	1.4	Type of operation (hand, pedestrian, standing, seated, order picker)	pedestrian	pedestrian	1.4
	1.5	Load capacity/rated load Q (t)	2.0	2.0	1.5
	1.5	Load capacity at mast lift Q (t)	1.0	1.0	1.5
	1.5	Load capacity at support arm lift Q (t)	1.0	1.0	1.5
	1.6	Load centre distance c (mm)	600	600	1.6
	1.8	Load distance, centre of drive axle to fork x (mm)	925 <sup>1)</sup>	925 <sup>1)</sup>	1.8
1.9	Wheelbase y (mm)	1578 <sup>1)</sup>	1650 <sup>1)</sup>	1.9	
Weights	2.1	Service weight incl. battery (see line 6.5) kg	1096	1172	2.1
	2.2	Axle loading, laden front/rear kg	2028/1068	2064/1108	2.2
	2.3	Axle loading, unladen front/rear kg	278/818	314/858	2.3
Wheels, Chassis	3.1	Tyres (solid rubber, superelastic, pneumatic, polyurethane)	Vulkollan	Vulkollan	3.1
	3.2	Tyre size, front	230 x 77	230 x 77	3.2
	3.3	Tyre size, rear	85 x 75	85 x 75	3.3
	3.4	Additional wheels (dimensions)	140 x 54	140 x 54	3.4
	3.5	Wheels, number front/rear (x = driven wheels)	3-1x/4	3-1x/4	3.5
	3.7	Track width, rear b <sub>11</sub> (mm)	380	380	3.7
Basic Dimensions	4.2	Lowered mast height h <sub>1</sub> (mm)	1250	1250	4.2
	4.4	Lift height h <sub>3</sub> (mm)	1660	1660	4.4
	4.5	Extended mast height h <sub>4</sub> (mm)	2250	2250	4.5
	4.6	Initial lift h <sub>5</sub> (mm)	125	125	4.6
	4.9	Height of tiller in drive position min./max. h <sub>14</sub> (mm)	1250/1490	1250/1490	4.9
	4.15	Lowered height h <sub>13</sub> (mm)	90	90	4.15
	4.19	Overall length (unladen) l <sub>1</sub> (mm)	2093	2165	4.19
	4.20	Length to face of forks l <sub>2</sub> (mm)	907	979	4.20
	4.21	Overall width b <sub>1</sub> /b <sub>2</sub> (mm)	770	770	4.21
	4.22	Fork dimensions s/e/l (mm)	65/190/1190	65/190/1190	4.22
	4.25	Width over forks b <sub>5</sub> (mm)	570	570	4.25
	4.32	Ground clearance, centre of wheelbase m <sub>2</sub> (mm)	30	30	4.32
	4.34	Aisle width for pallets 800 x 1200 lengthways Ast (mm)	2450 <sup>1)</sup>	2600 <sup>1)</sup>	4.34
4.35	Turning radius Wa (mm)	1780 <sup>1)</sup>	1930 <sup>1)</sup>	4.35	
Performance Data	5.1	Travel speed, laden/unladen km/h	7.2/8.2	7.2/8.2	5.1
	5.2	Lift speed, laden/unladen m/s	0.13/0.22	0.13/0.22	5.2
	5.3	Lowering speed, laden/unladen m/s	0.21/0.15	0.21/0.15	5.3
	5.7	Gradient performance, laden/unladen %	8/15	8/15	5.7
	5.8	Max. gradient performance, laden/unladen %	8/15	8/15	5.8
	5.10	Service brake	electro mechanic	electro mechanic	5.10
E-Motor	6.1	Drive motor rating S <sub>2</sub> 60 min. kW	2.0	2.0	6.1
	6.2	Lift motor rating at S <sub>3</sub> 15 % kW	2.2	2.2	6.2
	6.4	Battery voltage, nominal capacity K <sub>s</sub> V/Ah	24/230	24/345 (375)	6.4
	6.5	Battery weight kg	220	288	6.5
Others	8.1	Type of drive control	impulse control	impulse control	8.1

1) load section lowered: +70 mm

# Make use of the advantages

## Powerful drive motor and "intelligent" controls

Advanced drive technology and control electronics (SpeedControl) ensure safe travel characteristics with adjustment opportunities to every application:

- The travel speed prescribed on the travel switch is maintained in every travel situation – even on ascending/descending gradients.
- The brake on the ERD 220 is automatically applied if unintentional rolling on ramps occurs.
- Individually adjustable travel parameters facilitate optimum adjustment to every requirement.
- Energy reclamation through regenerative braking on taking back the travel speed.
- 2-year warranty on drive motor.

## Flexible application opportunities

Various platform types (foldable/fixed) provide different utilisation opportunities: Type 1: foldable stand-on platform with side supports.

- With a choice of pedestrian or stand-on operation.
- Reduced travel speed (4.4 km/h) in pedestrian operation.
- Reduced travel speed (5.0 km/h) with load raised (> 300 kg) in the mast lift.

Type 2: Fixed stand-on platform with enclosed operator platform (optional).

- Exclusively for applications without pedestrian operation.
- Protection for operator on both sides.

## Robust construction for the most intensive applications

- Chassis made of high-grade 8 mm steel.
- Torsion-resistant support arms with drawbar kinematics. Above all, no sagging on thresholds with heavy loads.



Fixed stand-on platform

## Long operating times

Battery capacities up to 375 Ah ensure long operating times.

- Short version: 2 PzS 230 Ah
- Long version: 3 PzS 345 (375) Ah

## Optimum cornering ability

Sprung, hydraulically cushioned support wheels – connected via the coupling rocker "ProTracLink" – distribute the bearing force evenly dependent on the travel situation – to all wheels on straight travel, concentrated on the outer support wheel on corners.

## Informed at any time

Extensive control instruments provide the operator with the good feeling of having everything under control at any time:

- Information display "CanDis" (optional) with added operating hour display and service code memory.
- Activation of truck via PIN through "CanCode" (optional).
- Other adjustment opportunities for travel parameters (optional).



Jungheinrich CanCode and CanDis (optional)

## Reduced maintenance

Service-friendly components ensure a long-term reduction in operating costs:

- Easy access to all aggregates through one-piece front cover with only two screws to be unscrewed.
- Low support wheel wear on sloped approach to ramp by way of level adjustment: being mechanically connected, both support wheels remain constantly at one level. The otherwise freely suspended support wheel does not touch anywhere and does not sustain any damage.
- A new type of form closure rims – exclusive to Jungheinrich – ensure a long lifespan of load wheels, even in the hardest applications.

## Additional equipment

- Electric tiller steering.
- Vertical load guards.
- Drive section for sideways battery removal.
- Cold store version.

## Jungheinrich UK Ltd.

Head Office:

Sherbourne House  
Sherbourne Drive  
Tilbrook  
Milton Keynes MK7 8HX  
Telephone 01908 363100

info@jungheinrich.co.uk  
www.jungheinrich.co.uk

ISO 9001, ISO 14001  
Certification of Quality and  
Environment Management.



Jungheinrich trucks  
conform to the European  
Safety Requirements.



**JUNGHEINRICH**  
Well worthwhile